



Demographic and Income Profile

Prepared by

Casa Grande PV

Latitude: 32.9078788560308

Longitude: -111.721806905115

Site Type: Radius

Radius:

1.0

Summary	2000	2008	2013
Population	587	3,365	5,386
Households	314	1,476	2,341
Families	196	1,006	1,591
Average Household Size	1.87	2.28	2.30
Owner Occupied HUs	207	975	1,534
Renter Occupied HUs	107	500	806
Median Age	39.7	36.7	37.8

Trends: 2008-2013 Annual Rate	Area	State	National
Population	9.86%	3.27%	1.23%
Households	9.66%	3.25%	1.26%
Families	9.6%	3.09%	1.05%
Owner HHs	9.49%	3.1%	1.07%
Median Household Income	4%	3.74%	3.19%

Households by Income	2000		2008		2013	
	Number	Percent	Number	Percent	Number	Percent
< \$15,000	94	28.6%	225	15.2%	294	12.6%
\$15,000 - \$24,999	45	13.7%	166	11.2%	207	8.8%
\$25,000 - \$34,999	74	22.5%	209	14.2%	252	10.8%
\$35,000 - \$49,999	66	20.1%	297	20.1%	410	17.5%
\$50,000 - \$74,999	30	9.1%	338	22.9%	672	28.7%
\$75,000 - \$99,999	11	3.3%	127	8.6%	261	11.2%
\$100,000 - \$149,999	3	0.9%	74	5.0%	194	8.3%
\$150,000 - \$199,000	6	1.8%	12	0.8%	9	0.4%
\$200,000+	0	0.0%	28	1.9%	40	1.7%
Median Household Income	\$27,141		\$41,292		\$50,229	
Average Household Income	\$31,035		\$49,147		\$57,236	
Per Capita Income	\$15,486		\$19,839		\$22,962	

Population by Age	2000		2008		2013	
	Number	Percent	Number	Percent	Number	Percent
0 - 4	33	5.6%	237	7.0%	385	7.1%
5 - 9	34	5.8%	223	6.6%	357	6.6%
10 - 14	35	6.0%	234	6.9%	357	6.6%
15 - 19	43	7.3%	236	7.0%	346	6.4%
20 - 24	45	7.7%	216	6.4%	330	6.1%
25 - 34	73	12.5%	461	13.7%	724	13.4%
35 - 44	67	11.4%	461	13.7%	713	13.2%
45 - 54	51	8.7%	489	14.5%	795	14.8%
55 - 64	58	9.9%	399	11.9%	717	13.3%
65 - 74	71	12.1%	231	6.9%	394	7.3%
75 - 84	66	11.3%	134	4.0%	191	3.5%
85+	10	1.7%	46	1.4%	76	1.4%

Race and Ethnicity	2000		2008		2013	
	Number	Percent	Number	Percent	Number	Percent
White Alone	416	71.0%	2,368	70.4%	3,759	69.8%
Black Alone	14	2.4%	108	3.2%	179	3.3%
American Indian Alone	23	3.9%	201	6.0%	348	6.5%
Asian Alone	3	0.5%	11	0.3%	15	0.3%
Pacific Islander Alone	0	0.0%	2	0.1%	3	0.1%
Some Other Race Alone	112	19.1%	584	17.4%	939	17.4%
Two or More Races	18	3.1%	90	2.7%	143	2.7%
Hispanic Origin (Any Race)	175	29.8%	982	29.2%	1,577	29.3%

Data Note: Income is expressed in current dollars.

Source: U.S. Bureau of the Census, 2000 Census of Population and Housing. ESRI forecasts for 2008 and 2013.



Casa Grande PV

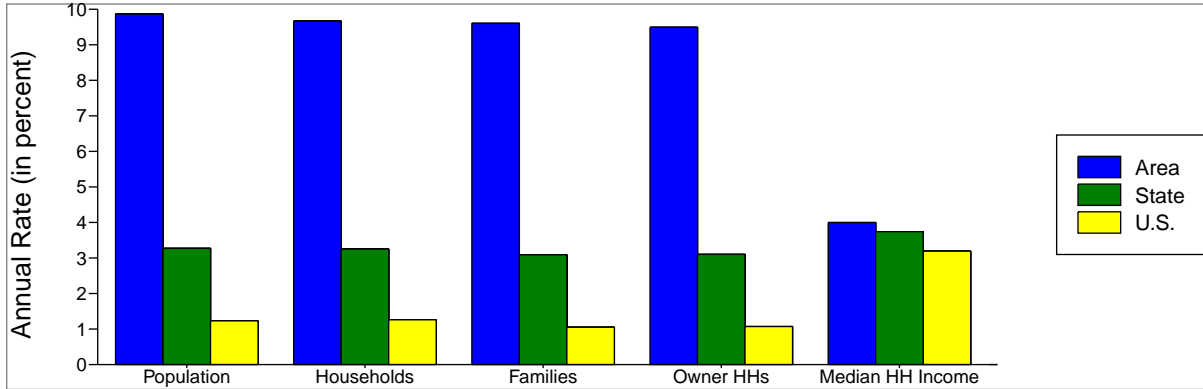
Latitude: 32.9078788560308

Longitude: -111.721806905115

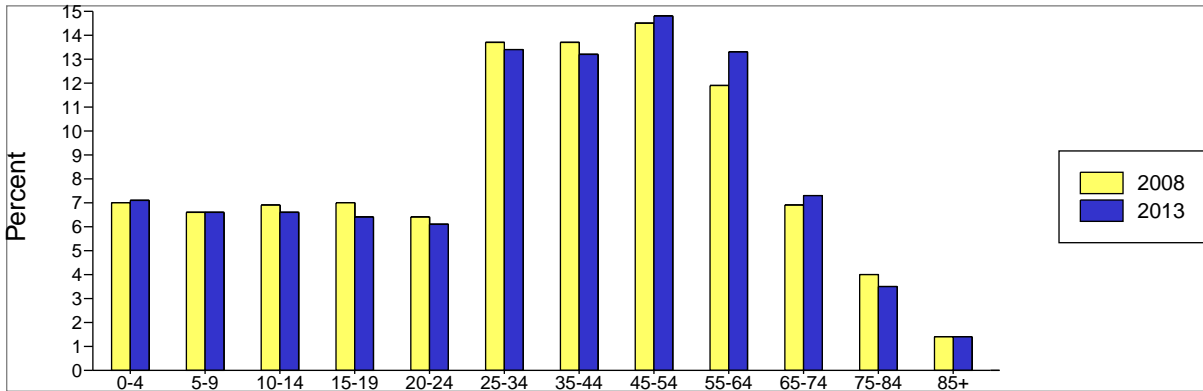
Site Type: Radius

Radius: 1.0

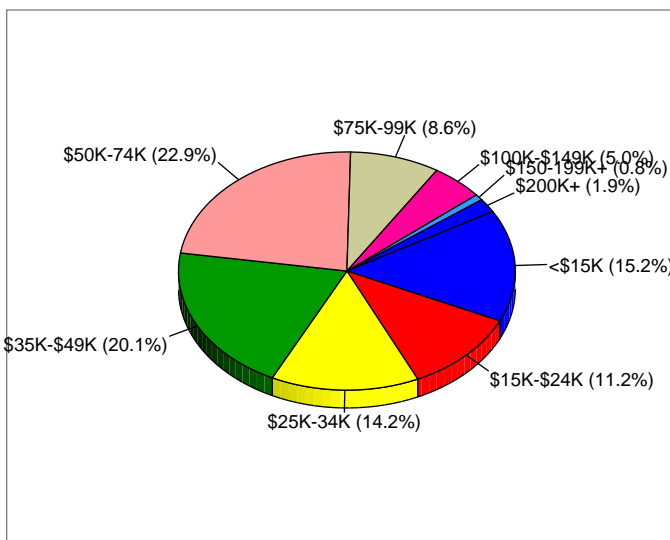
Trends 2008-2013



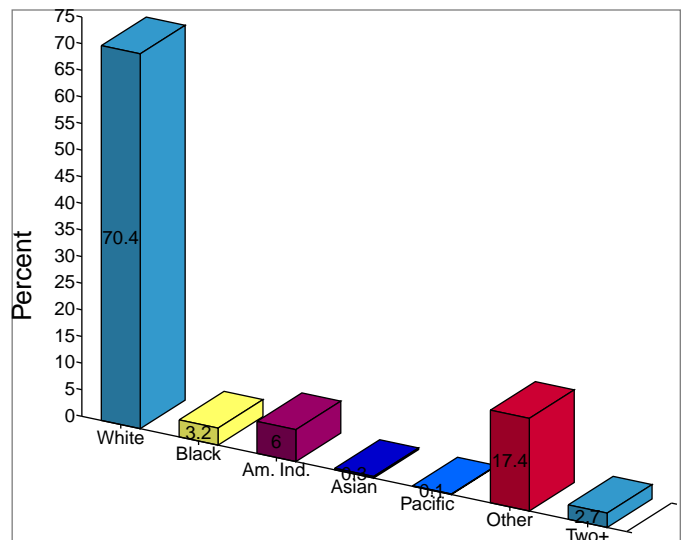
Population by Age



2008 Household Income



2008 Population by Race



2008 Percent Hispanic Origin: 29.2%



Demographic and Income Profile

Prepared by

Casa Grande PV

Latitude: 32.9078788560308

Longitude: -111.721806905115

Site Type: Radius

Radius:

3.0

Summary	2000	2008	2013
Population	24,189	33,416	42,687
Households	8,721	13,003	16,823
Families	6,339	9,165	11,741
Average Household Size	2.75	2.55	2.53
Owner Occupied HUs	5,624	8,288	10,549
Renter Occupied HUs	3,097	4,715	6,274
Median Age	32.7	34.3	35.4

Trends: 2008-2013 Annual Rate	Area	State	National
Population	5.02%	3.27%	1.23%
Households	5.29%	3.25%	1.26%
Families	5.08%	3.09%	1.05%
Owner HHs	4.94%	3.1%	1.07%
Median Household Income	3.6%	3.74%	3.19%

Households by Income	2000		2008		2013	
	Number	Percent	Number	Percent	Number	Percent
< \$15,000	1,669	19.2%	1,938	14.9%	2,165	12.9%
\$15,000 - \$24,999	1,281	14.7%	1,584	12.2%	1,576	9.4%
\$25,000 - \$34,999	1,430	16.4%	1,436	11.0%	1,689	10.0%
\$35,000 - \$49,999	1,513	17.4%	2,251	17.3%	2,467	14.7%
\$50,000 - \$74,999	1,581	18.2%	2,901	22.3%	4,249	25.3%
\$75,000 - \$99,999	656	7.5%	1,290	9.9%	2,134	12.7%
\$100,000 - \$149,999	392	4.5%	1,129	8.7%	1,947	11.6%
\$150,000 - \$199,000	137	1.6%	224	1.7%	256	1.5%
\$200,000+	50	0.6%	251	1.9%	341	2.0%
Median Household Income	\$34,780		\$44,587		\$53,216	
Average Household Income	\$43,600		\$55,601		\$62,453	
Per Capita Income	\$15,711		\$21,393		\$24,221	

Population by Age	2000		2008		2013	
	Number	Percent	Number	Percent	Number	Percent
0 - 4	2,062	8.5%	2,801	8.4%	3,521	8.2%
5 - 9	2,106	8.7%	2,467	7.4%	3,097	7.3%
10 - 14	2,023	8.4%	2,420	7.2%	2,938	6.9%
15 - 19	1,903	7.9%	2,417	7.2%	2,811	6.6%
20 - 24	1,571	6.5%	2,387	7.1%	2,908	6.8%
25 - 34	3,139	13.0%	4,514	13.5%	5,857	13.7%
35 - 44	3,211	13.3%	3,977	11.9%	4,881	11.4%
45 - 54	2,681	11.1%	4,185	12.5%	5,381	12.6%
55 - 64	2,051	8.5%	3,666	11.0%	5,323	12.5%
65 - 74	1,982	8.2%	2,417	7.2%	3,281	7.7%
75 - 84	1,178	4.9%	1,622	4.9%	1,908	4.5%
85+	281	1.2%	545	1.6%	782	1.8%

Race and Ethnicity	2000		2008		2013	
	Number	Percent	Number	Percent	Number	Percent
White Alone	16,190	66.9%	21,428	64.1%	27,299	64.0%
Black Alone	968	4.0%	1,565	4.7%	2,032	4.8%
American Indian Alone	1,139	4.7%	2,030	6.1%	2,722	6.4%
Asian Alone	251	1.0%	447	1.3%	577	1.4%
Pacific Islander Alone	22	0.1%	25	0.1%	32	0.1%
Some Other Race Alone	4,817	19.9%	6,789	20.3%	8,578	20.1%
Two or More Races	802	3.3%	1,133	3.4%	1,447	3.4%
Hispanic Origin (Any Race)	9,244	38.2%	13,220	39.6%	16,830	39.4%

Data Note: Income is expressed in current dollars.

Source: U.S. Bureau of the Census, 2000 Census of Population and Housing. ESRI forecasts for 2008 and 2013.



Casa Grande PV

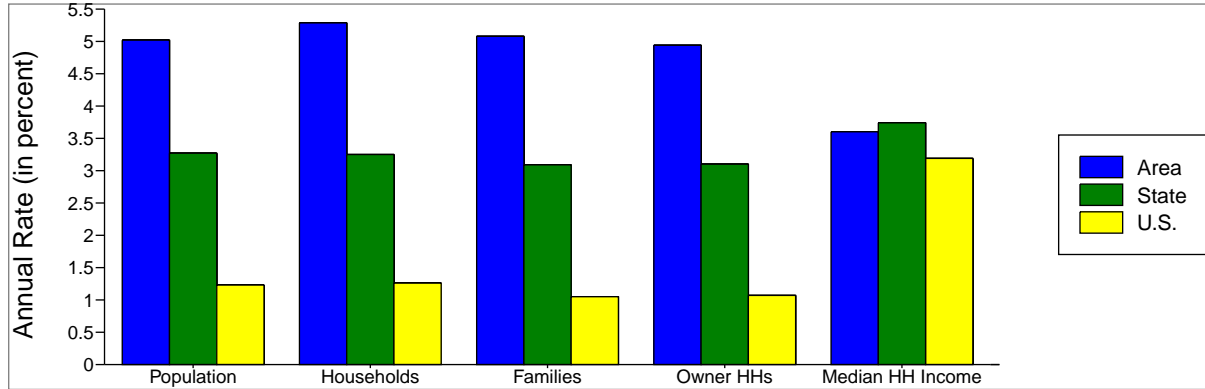
Latitude: 32.9078788560308

Longitude: -111.721806905115

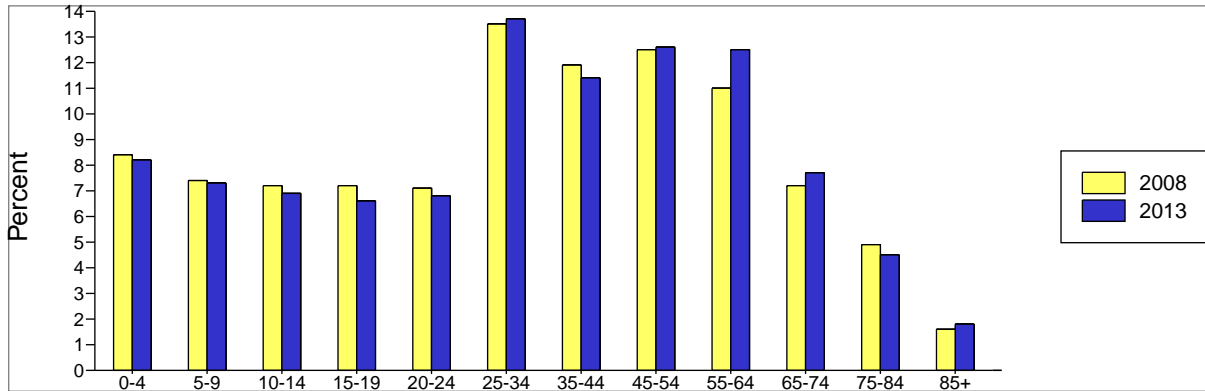
Site Type: Radius

Radius: 3.0

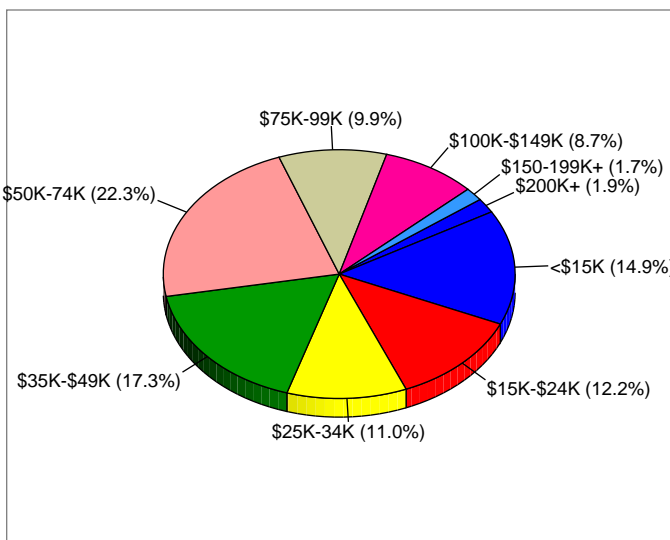
Trends 2008-2013



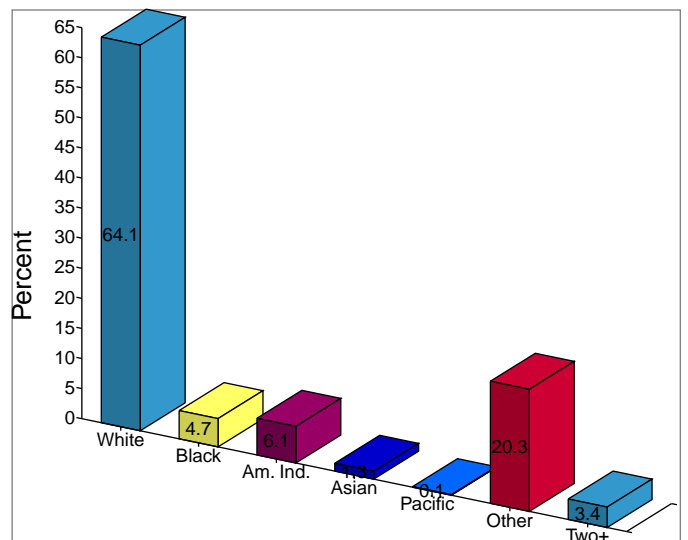
Population by Age



2008 Household Income



2008 Population by Race



2008 Percent Hispanic Origin: 39.6%



Demographic and Income Profile

Prepared by

Casa Grande PV

Latitude: 32.9078788560308

Longitude: -111.721806905115

Site Type: Radius

Radius:

5.0

Summary	2000	2008	2013
Population	30,367	43,221	59,950
Households	10,733	16,256	22,675
Families	7,890	11,593	16,036
Average Household Size	2.80	2.64	2.63
Owner Occupied HUs	7,094	10,673	14,956
Renter Occupied HUs	3,639	5,584	7,719
Median Age	32.9	34.7	36.5

Trends: 2008-2013 Annual Rate	Area	State	National
Population	6.76%	3.27%	1.23%
Households	6.88%	3.25%	1.26%
Families	6.7%	3.09%	1.05%
Owner HHs	6.98%	3.1%	1.07%
Median Household Income	3.44%	3.74%	3.19%

Households by Income	2000		2008		2013	
	Number	Percent	Number	Percent	Number	Percent
< \$15,000	2,029	18.8%	2,303	14.2%	2,620	11.6%
\$15,000 - \$24,999	1,631	15.1%	1,885	11.6%	1,896	8.4%
\$25,000 - \$34,999	1,766	16.4%	2,032	12.5%	2,564	11.3%
\$35,000 - \$49,999	1,925	17.9%	2,850	17.5%	3,737	16.5%
\$50,000 - \$74,999	1,933	17.9%	3,700	22.8%	5,438	24.0%
\$75,000 - \$99,999	805	7.5%	1,574	9.7%	3,234	14.3%
\$100,000 - \$149,999	471	4.4%	1,324	8.1%	2,395	10.6%
\$150,000 - \$199,000	162	1.5%	279	1.7%	309	1.4%
\$200,000+	59	0.5%	308	1.9%	481	2.1%
Median Household Income	\$34,754		\$44,342		\$52,505	
Average Household Income	\$43,356		\$55,547		\$63,484	
Per Capita Income	\$15,522		\$21,036		\$24,154	

Population by Age	2000		2008		2013	
	Number	Percent	Number	Percent	Number	Percent
0 - 4	2,538	8.4%	3,538	8.2%	4,734	7.9%
5 - 9	2,625	8.6%	3,165	7.3%	4,255	7.1%
10 - 14	2,537	8.4%	3,127	7.2%	4,110	6.9%
15 - 19	2,441	8.0%	3,151	7.3%	3,980	6.6%
20 - 24	1,969	6.5%	3,001	6.9%	3,925	6.5%
25 - 34	3,912	12.9%	5,786	13.4%	7,953	13.3%
35 - 44	4,084	13.4%	5,271	12.2%	7,070	11.8%
45 - 54	3,424	11.3%	5,560	12.9%	7,914	13.2%
55 - 64	2,624	8.6%	4,779	11.1%	7,608	12.7%
65 - 74	2,449	8.1%	3,128	7.2%	4,656	7.8%
75 - 84	1,439	4.7%	2,040	4.7%	2,672	4.5%
85+	324	1.1%	673	1.6%	1,072	1.8%

Race and Ethnicity	2000		2008		2013	
	Number	Percent	Number	Percent	Number	Percent
White Alone	20,109	66.2%	27,329	63.2%	37,532	62.6%
Black Alone	1,174	3.9%	1,955	4.5%	2,760	4.6%
American Indian Alone	1,434	4.7%	2,685	6.2%	4,022	6.7%
Asian Alone	298	1.0%	519	1.2%	674	1.1%
Pacific Islander Alone	29	0.1%	32	0.1%	42	0.1%
Some Other Race Alone	6,277	20.7%	9,208	21.3%	12,899	21.5%
Two or More Races	1,046	3.4%	1,493	3.5%	2,021	3.4%
Hispanic Origin (Any Race)	11,741	38.7%	17,296	40.0%	24,082	40.2%

Data Note: Income is expressed in current dollars.

Source: U.S. Bureau of the Census, 2000 Census of Population and Housing. ESRI forecasts for 2008 and 2013.



Casa Grande PV

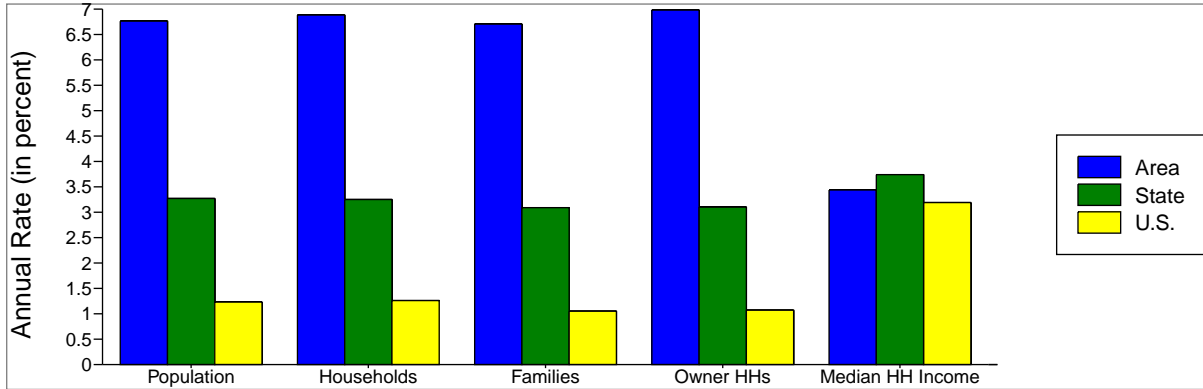
Latitude: 32.9078788560308

Longitude: -111.721806905115

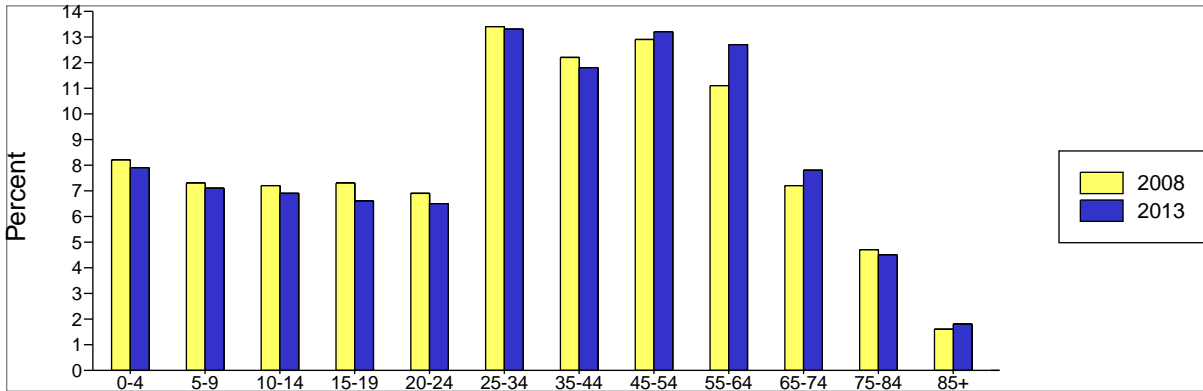
Site Type: Radius

Radius: 5.0

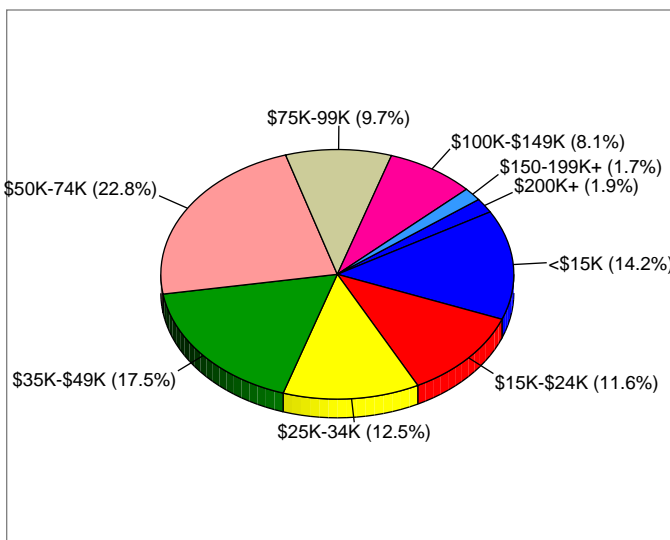
Trends 2008-2013



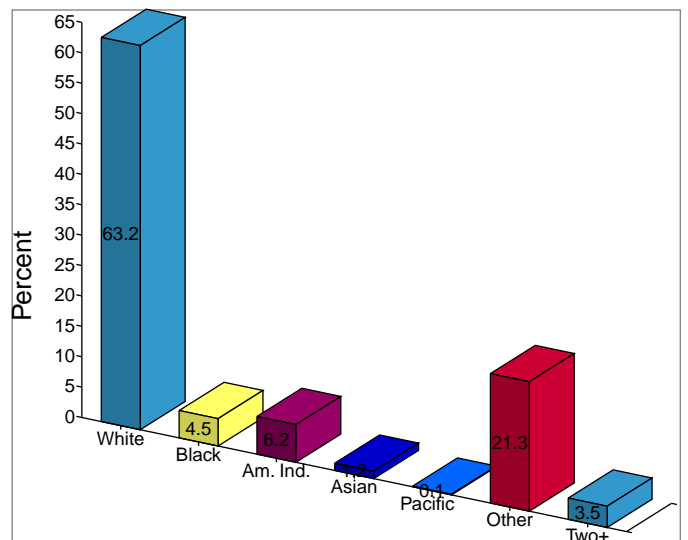
Population by Age



2008 Household Income



2008 Population by Race



2008 Percent Hispanic Origin: 40.0%